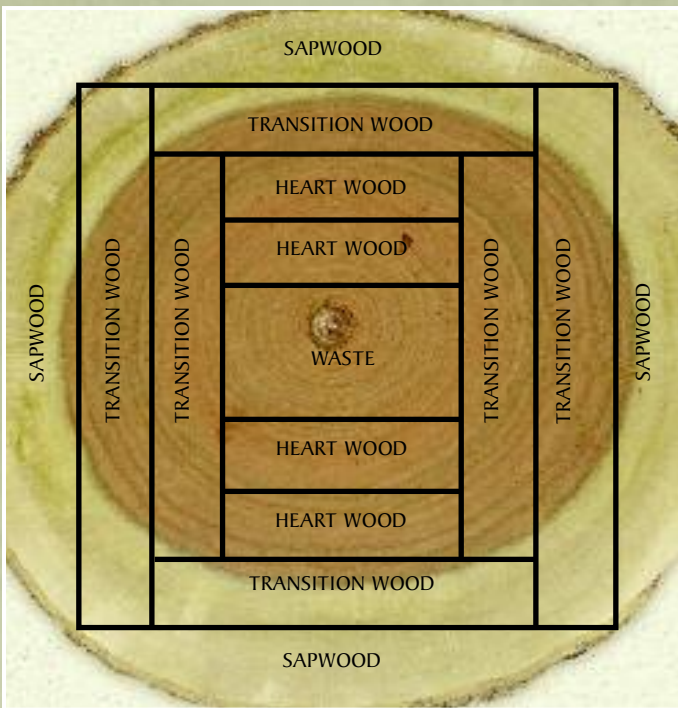


Cherry



Cherry, also known as Black Cherry, is often considered the top-of-the-line in hardwoods. Light yet strong, Cherry's fine grain pattern is more subtle than some of the other hardwoods. This luxury wood's smooth texture feels satiny to the touch and its distinctive luster seems to glow, making it highly desirable for cabinetry and fine furniture making. Cherry is grown mostly in the Mid-Atlantic States. We offer Cherry as a standard wood species in both our framed and frameless cabinetry lines.





Cherry logs are carefully cut to maximize the yield. A typical cut pattern is shown above – note the cuts that result in a combination of heartwood and white wood.



Four different stain colors are used to demonstrate the way Cherry will darken over time. Samples at left are original stain colors, the center column has begun to age, and the far right column has mellowed and taken on Cherry's distinctive patina.

Characteristics of Cherry

Cherry is moderate in hardness, weight, and strength, with a fine to medium grain pattern and a relatively smooth surface. Characteristics include gum spots (little black flecks), pin knots, and sapwood (lighter in color.) Colors vary from off-white to light red to dark, reddish brown.

Cherry is unique in that its rich coloring darkens with age and exposure to light, more so than with other woods. It has a light-sensitive property,

containing a resin called lignin, that causes the wood to turn soft amber over time. As it is exposed to sun, natural light and day-to-day use, Cherry takes on a rich patina. Cherry reaches "color maturity" at different rates depending upon its daily exposure to light.

Cherry has been prized for centuries for its color and beauty. Easy to carve and polish, it is also used for architectural woodwork, millwork, flooring and boat interiors.

The Aging Process and Color

Please note that if you order a Natural or lighter-colored finish on your Cherry cabinetry, you will notice a distinct difference in the color from when it was first installed to when it has had a chance to darken naturally. If you want the natural look of Cherry without the naturally occurring color variance, we strongly recommend that you order Cherry stained in a darker color, such as Pecan.

When adding or replacing Cherry cabinets to existing cabinetry, the new products finished in the same stain color will be lighter for a period of time. As the product ages, the color tones of the new pieces will blend with the original.

Architectural accents such as mouldings, corbels and onlays add visual interest to a room. We have partnered with Enkeboll Designs to offer their beautifully detailed products to our customers. Visit the Architectural Accents page in the "Beyond the Basics" section of our web site for more information.