

Frameless

cabinetry at

a value price

for any room

in the home:

Kitchen

Vanity

Media Center

Great Room

Home Office

Laundry Room

Master Suite

And More...



## Katana Frameless Cabinetry

**CANYON CREEK**  
Cabinet Company

**Thermo Structured Surface (TSS)** is a unique alternative to wood, featuring a textured wood grain face that has been thermally fused and heat stamped to a particleboard core.

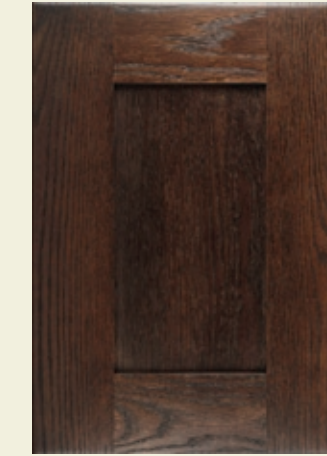


**Trinity**  
in Driftwood



Dunsmuir in Cherry/Cayenne is paired with Rockport in Maple/Sage with Chocolate Glaze

**Wood Doors**, shown on this page, are offered in the paint colors at left, Ebony, and the stain colors below – with or without Glazing. See the back page for information about Katana wood species.



**Brighton**  
in Red Oak/Espresso



**Burlington**  
in Alder/Cinnamon



**Magnum**  
in Icing



**Sabre**  
in Cornsilk



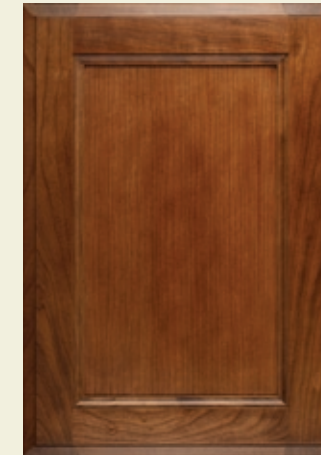
**Talladaga**  
in Maple/Crème/CG



**Rockport**  
in White/PG



**Pallanza**  
in Rustic Alder/Cinnamon



**Dunsmuir**  
in Cherry/Sable



**Apollo**  
in Alder/Sea Drift/CG

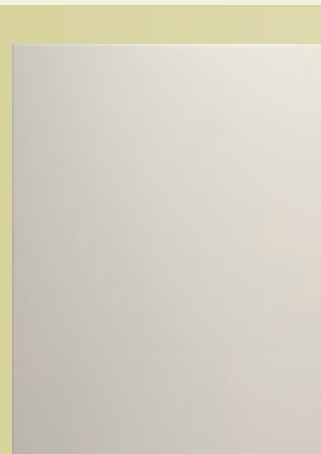


**Palentina**  
in Maple/Kona/LG

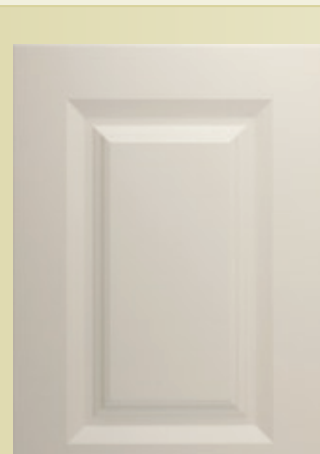


**Ventura**  
in Maple/Sage/LG

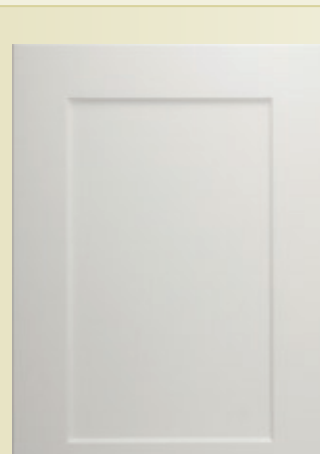
Maple and MDF doors are available in the paint colors above – with or without Glazing



**Neo**  
in Crème



**Trenton**  
in Crème

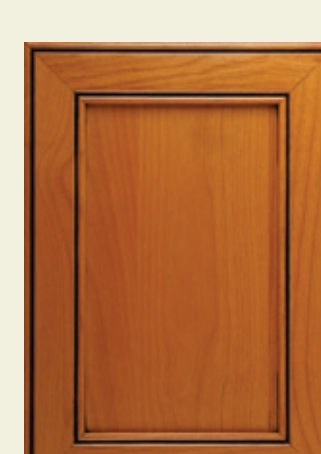


**Jericho**  
in White

Thermofoil styles are available in White or Crème



**Fremont**  
in Red Oak/Mulberry/PG



**Frasier**  
in Alder/Pecan/CG



**Yosemite**  
in Maple/Dune/SG



**Vista**  
in Cherry/Chicory

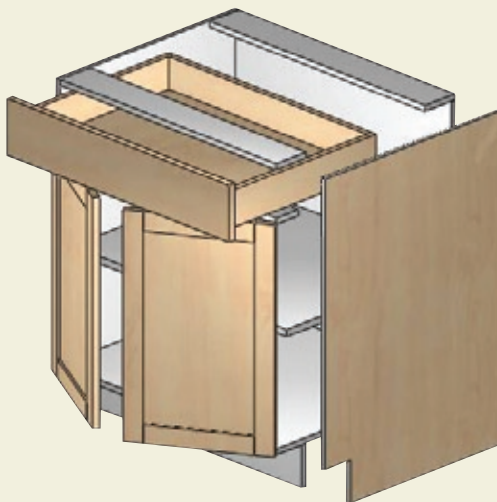
N/A in Rustic Alder

CG = Chocolate Glaze | LG = Licorice Glaze | PG = Pewter Glaze | SG = Suede Glaze | VG = Vanilla Glaze

**Katana frameless cabinetry** offers quality cabinetry at a great price – along with the excellent customer service you expect from Canyon Creek! Manufactured in our 250,000 square-foot facility in Monroe, WA, your Katana order will be available for delivery in as little as four weeks.

Like all of our cabinets, Katana features a durable, low-VOC finish that will stand up to just about any household food product or chemical without damage, and we back the line with a one-year warranty.

- **Drawer boxes** and roll-outs are 1/2" plywood dovetail construction with a natural wood finish and a fully captured bottom panel. All drawer boxes are maximum depth.
- Undermount, full-extension **drawer guides** feature a soft close system, and are rated for 100 lbs.
- One-piece **concealed hinges** open 110° and include a soft close function.
- **Adjustable shelves** are 3/4" thick full-depth particleboard and adjust in 1-1/4" increments. Shelves are white melamine to match the cabinet interior.



- The **cabinet box** is constructed of 5/8" thick particleboard on top, bottom, sides, toe-kicks and spreaders. Boxes are doweled and glued for stability. The 1/8" thick captured back includes a 5/8" thick concealed hanging rail.
- Integral **finished ends** (IFE) may be ordered for each cabinet (the standard exterior is unfinished).
- **Interior finish** is white melamine. A finished to match (FMI) option is available on select cabinets.

**The Beauty of Wood** As a product of nature, our wood species feature a variety of colors and grain patterns that add to their appeal. Color variation can be influenced by factors such as the moisture and mineral content of the soil, exposure to sunlight, and genetic makeup. The age, tree diameter and type of cut can affect the grain pattern and color as well. You should expect to see a range of grain patterns and colors on adjacent door and drawer fronts, and even on the same panel.



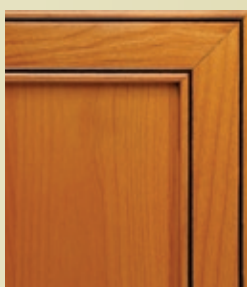
**Maple**

A strong, relatively heavy wood with a fairly uniform grain pattern and a smooth surface. Color may range from nearly white to yellow, pink or red-brown.



**Cherry**

Moderate in hardness, with a medium grain and relatively smooth surface. Cherry will darken as it ages, especially when exposed to natural light.



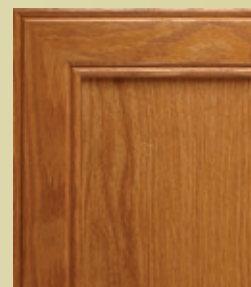
**Alder**

Lightweight and somewhat soft, with moderate graining and a smooth surface. Alder may be very white, tan or pale, pinkish brown, all in the same board.



**Rustic Alder**

Rustic features include mineral streaks, naturally occurring cracks, grain roughness, knots, and wider color variation than is present on Alder.



**Red Oak**

Dense and heavy, with an open, prominent grain pattern. Mineral streaks, mineral stains, ray flecks, and small, closed knots may be present.

