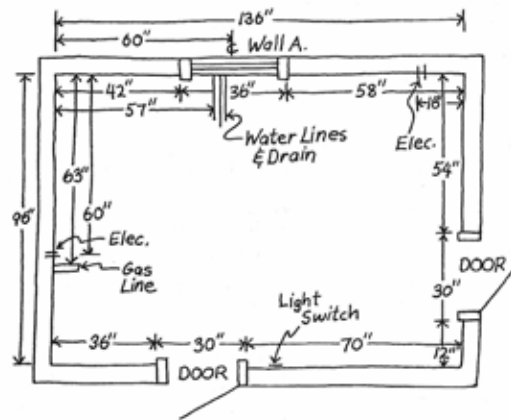


Sketch Your Space

Providing complete room information will help your Closets Plus designer make the most of your space while working around potential obstacles such as light switches, electrical panels, angled walls and attic or crawl space access.

Space: All four walls should be measured, and should include window and door dimensions (including trim), ceiling and soffit heights, placement of light switches, electrical outlets, and utility panels. Be sure to indicate which direction doors swing. For new construction, remember to include thickness of sheetrock and proposed flooring.

Appliances: Specifications are required for all appliances that will be used, whether existing or new purchases. For sinks, be sure to indicate size and depth. Also note if doors are hinged on the left or the right.



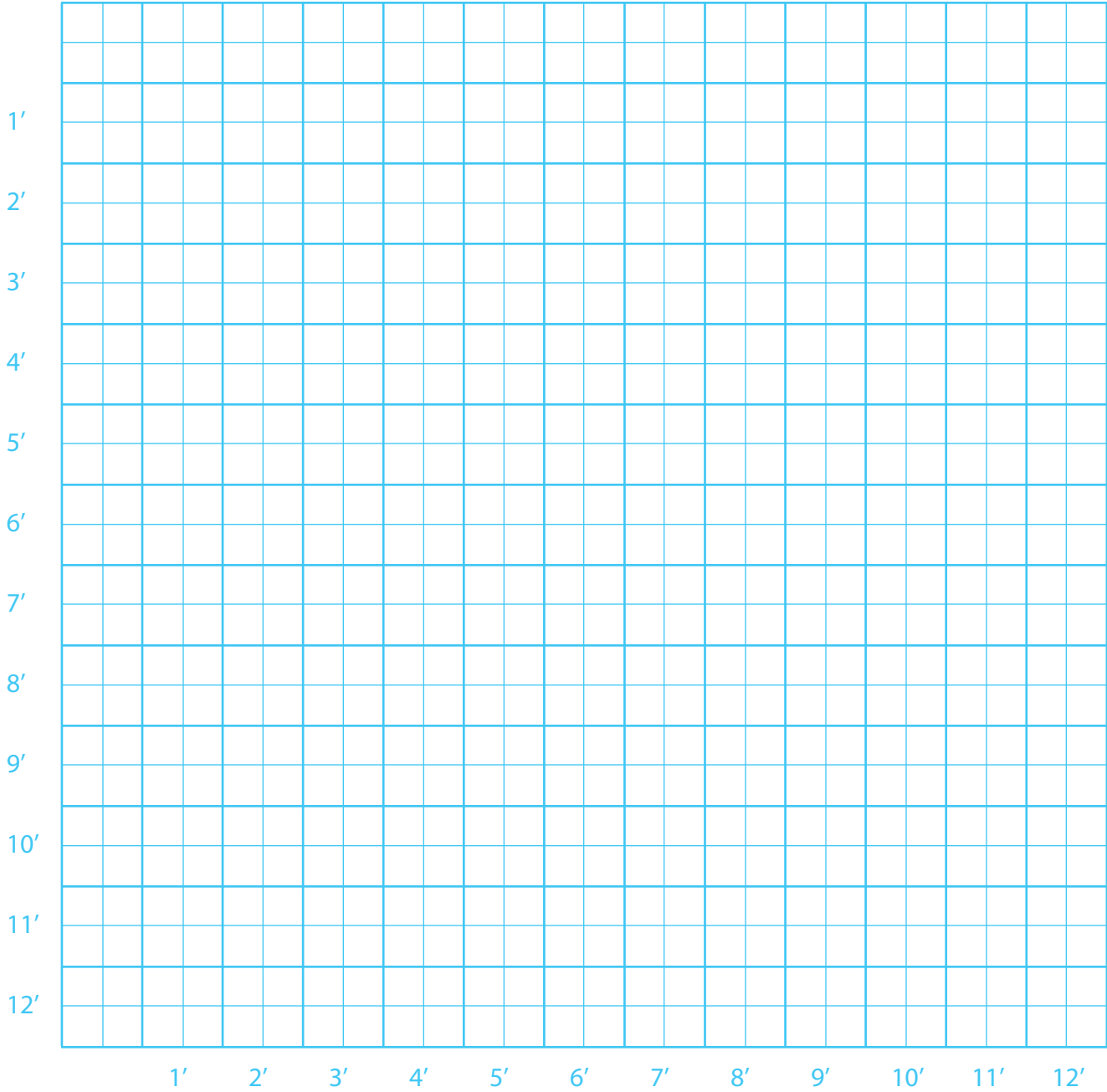
- Make sure you note locations of existing and proposed:
- doors
 - windows
 - ceiling height
 - vents
 - switches
 - outlets
 - light fixtures
 - utility panels
 - security system
 - sprinkler heads

Appliance Specifications (Provide detailed specs for all appliances that will be used in the room)

Appliance	Brand/Model	Width	Height	Depth	Hinge Pos. on L/R	"X" if Existing
Microwave						
Mini Fridge						
Wine Cooler						
Built In Coffee Maker						
Espresso Maker						
Sink 1						
Washer						
Dryer						
Television						

Notes/Comments (Make note of unique features in the room, or special requests for the space)

Floor Plan Sketch (Draw out the basic layout of your space - include windows, doors and ceiling heights)



Each large square equals 1 sq. ft. and smaller squares are 6".