

A quick-reference guide to the many closet options available, helpful tips on project planning, and a grid to record measurements of your space.



Closet Planning Guide

CANYON CREEK
Cabinet Company
CLOSETS PLUS

Closet Inventory

Performing a quick inventory of the items that are currently in your closet – and items that will be added – will help your Closets Plus designer create the most effective layout.

- Take separate inventory counts for each user - we've provided two columns for shared closets.
- Take separate inventory counts for each closet.
- When measuring hanging items, measure from the closet rod to the bottom of the garment.
- Folded items generally take up 12" of space - make a note if you fold wider than 12".
- When measuring shoes, handbags and other items, count boots, oversize or bulky items separately.

SHORT HANG (39" or less, including hanger)			MEDIUM HANG (39" - 54", including hanger)		
	USER 1	USER 2		USER 1	USER 2
Shirts/Blouses	_____	_____	Short Dresses	_____	_____
T-Shirts	_____	_____	Pantsuits/Men's Suits	_____	_____
Sweaters/Vests	_____	_____	Pants (hung long)	_____	_____
Jackets/Sport Coats	_____	_____	Long Jackets	_____	_____
Pants (folded)	_____	_____	Medium Coats	_____	_____
Misc. Short Hang	_____	_____	Misc. Medium Hang	_____	_____
LONG HANG (More than 54", including hanger)			FOLDED GARMENTS (Number of items)		
Long Dresses/Gowns	_____	_____	Sweatshirts/Pants	_____	_____
Overalls/Jumpsuits	_____	_____	Sweaters - Bulky	_____	_____
Bath Robes	_____	_____	Sweaters - Thin	_____	_____
Long/Trench Coats	_____	_____	T-Shirts	_____	_____
Misc. Long Hang	_____	_____	Misc. Folded Garments	_____	_____

NOTES: _____

NON-FOLDED GARMENTS			ITEMS ON SHELVES - SMALL		
	USER 1	USER 2		USER 1	USER 2
Lingerie	_____	_____	Shoes - Pairs	_____	_____
Underwear	_____	_____	Purses/Handbags	_____	_____
Socks/Nylons	_____	_____	Shoe Boxes	_____	_____
Scarves - Bulky	_____	_____	Hat Boxes	_____	_____
Scarves - Thin	_____	_____	Gift Boxes/Bags	_____	_____
Gloves/Mittens	_____	_____	Misc. Small Items	_____	_____

ITEMS ON HOOKS			ITEMS ON SHELVES - LARGE		
Robes	_____	_____	Boots - Pairs	_____	_____
Belts	_____	_____	Purses/Handbags	_____	_____
Ties	_____	_____	Luggage	_____	_____
Purses/Handbags	_____	_____	Quilts/Comforters	_____	_____
Jewelry	_____	_____	Blankets/Pillows	_____	_____
Misc. Items	_____	_____	Misc. Large Items	_____	_____

WISH LIST (Mark item you would like to have incorporated into your new closet)					
Drawers - Shallow	_____	_____	Angled Shoe Shelves	_____	_____
Drawers - Deep	_____	_____	Hooks	_____	_____
Jewelry Trays	_____	_____	Belt Rack	_____	_____
Drawer Cubbies	_____	_____	Tie or Scarf Rack	_____	_____
Baskets	_____	_____	Valet Rod	_____	_____
Hampers	_____	_____	Shelf Dividers	_____	_____
Pull-out Pants Rack	_____	_____	Wardrobe Lift	_____	_____
Ironing Board	_____	_____	Mirror	_____	_____

Function

Now that you have a good idea of the items to be stored and the amount of space to work with, you can start selecting the shelves, hanging rods and accessories that will make your closet work just the way you want it to.

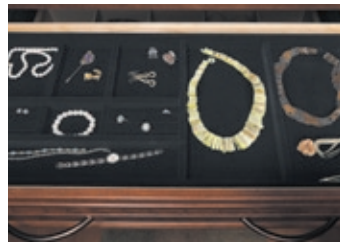
Basic Storage

Shelves, rods, drawers and baskets are the workhorse items in any closet.



Small Items

Keep smaller items from getting jumbled up with a selection of accessories that divide up space.



Hanging Items

Keep track of pants, skirts, belts, ties, scarfs and hard-to-reach items with specialized options.



Dressing Room

Hampers to hide laundry, ironing boards that hide away, and a fold-out mirror to let you see - smart!



Appearance

Canyon Creek's Closets Plus offers a range of colors and hardware choices to fit every budget and decor. Ask your Closets Plus designer for ideas on how to make your closet, pantry or mudroom look just the way you want it...

Color Selections

Vertical panels, shelves, moulding and trim are available in the melamine colors & woods shown below:



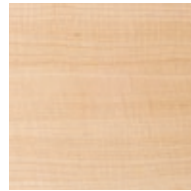
White



Creme



Caramel



Chai



Chocolate



Ancona Walnut



Western Alder

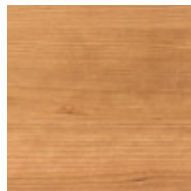


Windsor Mahogany

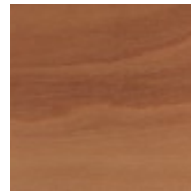
White through Windsor Mahogany are melamines. See your authorized CCCP distributor for stain selections.



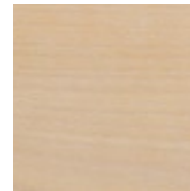
Maple



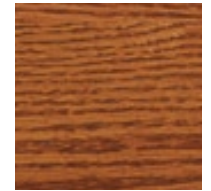
Cherry



Alder



Beech



Red Oak

Closet Rods

Closet rod colors were chosen to coordinate with the accessories available.



Polished Chrome (PC)



Satin Nickel (SN)



Oil Rubbed Bronze (ORB)



Deluxe PC



Deluxe SN



Deluxe ORB

Doors & Acrylic Panels

Choose from a range of Thermofoil, Cherry and Maple doors that you can accent with Acrylic Panel inserts. See your authorized Closets Plus distributor for the full range of door styles.



Calypto



Jackson



Talbot



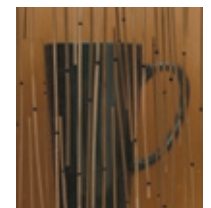
Larkspur Roman



Spectrum



Rain Emboss



Zito

Hardware

Select knobs, square pulls or curved pulls in Satin Nickel or Oil Rubbed Bronze



Knobs



Satin Nickel



Oil Rubbed Bronze



Satin Nickel



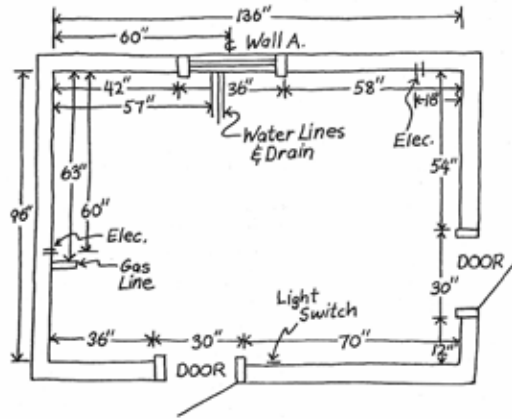
Oil Rubbed Bronze

Sketch Your Space

Providing complete room information will help your Closets Plus designer make the most of your space while working around potential obstacles such as light switches, electrical panels, angled walls and attic or crawl space access.

Space: All four walls should be measured, and should include window and door dimensions (including trim), ceiling and soffit heights, placement of light switches, electrical outlets, and utility panels. Be sure to indicate which direction doors swing. For new construction, remember to include thickness of sheetrock and proposed flooring.

Appliances: Specifications are required for all appliances that will be used, whether existing or new purchases. For sinks, be sure to indicate size and depth. Also note if doors are hinged on the left or the right.



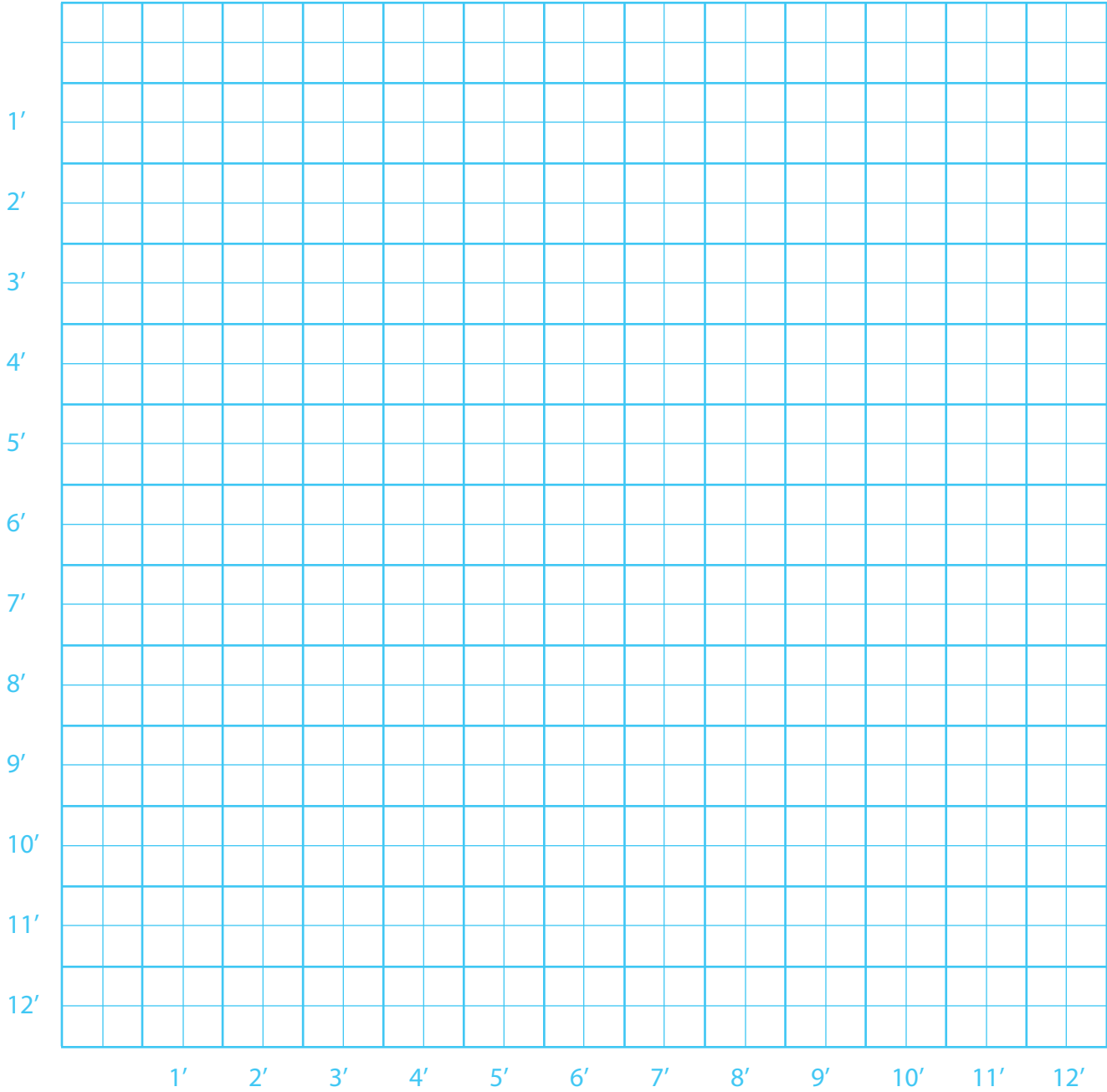
- Make sure you note locations of existing and proposed:
- doors
 - windows
 - ceiling height
 - vents
 - switches
 - outlets
 - light fixtures
 - utility panels
 - security system
 - sprinkler heads

Appliance Specifications (Provide detailed specs for all appliances that will be used in the room)

Appliance	Brand/Model	Width	Height	Depth	Hinge Pos. on L/R	"X" if Existing
Microwave						
Mini Fridge						
Wine Cooler						
Built In Coffee Maker						
Espresso Maker						
Sink 1						
Washer						
Dryer						
Television						

Notes/Comments (Make note of unique features in the room, or special requests for the space)

Floor Plan Sketch (Draw out the basic layout of your space - include windows, doors and ceiling heights)



Each large square equals 1 sq. ft. and smaller squares are 6".

Info & Prep for Installation

Being prepared for installation day through careful planning will help to ensure that your new closet system from Canyon Creek Cabinet Company is ready to use right after installation.

BEFORE Installation Day

1. Carefully review the design and signed contract. If there are any changes needed, contact your salesperson/designer immediately.

Please note that installers construct each system as specified by the design coinciding with your signed contract agreement.

2. Reserve and clear out a work area in the garage (if available) for the installation crew to cut, store and prep parts.

3. If necessary, make reservations to ensure that an elevator is available.

4. Remove all previous closet materials (shelving, poles, hangers, clothing, etc.). Take out all existing base moulding (when applicable) from the closet.

(You may need to remove crown moulding if it is located within the area where the new closet system will be installed.)

5. Have new carpet or other flooring installed if you plan to do so. Panels that reach the floor will rest on existing flooring so it is best not to change the flooring after the closet system goes in.

6. Paint the room before installation if you plan on doing so. Please remember to keep extra paint for touch-ups if needed after installation.

7. Remove all pictures and wall hangings from adjoining walls as they can be shaken loose during installation.

THE DAY OF Installation

1. Please have someone onsite who can make decisions in case the installation crew has questions.

2. Because it is difficult to estimate the length and circumstances of each job, you will be given an appointment window. On the day of installation, make sure you are available by phone for updates on the installation crew's schedule.

3. The installation crew will use a variety of tools and techniques that can make the work area (garage space and closet area) hazardous. Please make sure family members and pets are kept out of the work area on installation day.

4. At the completion of the installation, we recommend that you perform a "walk-thru" of the project with the installer. This will give you the opportunity to ask questions and be clear on any final details.

